

# MONTHLY MEMBERSHIP PROGRESS REPORT

LOCATION TEXAS

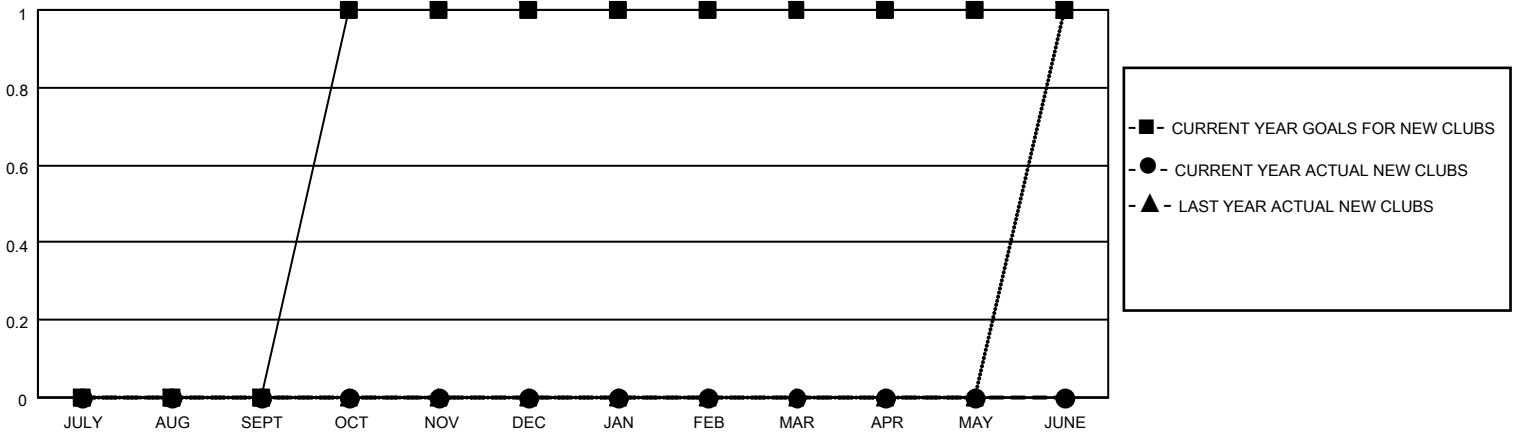
District 2 T3

Results as of: 5/31/2022

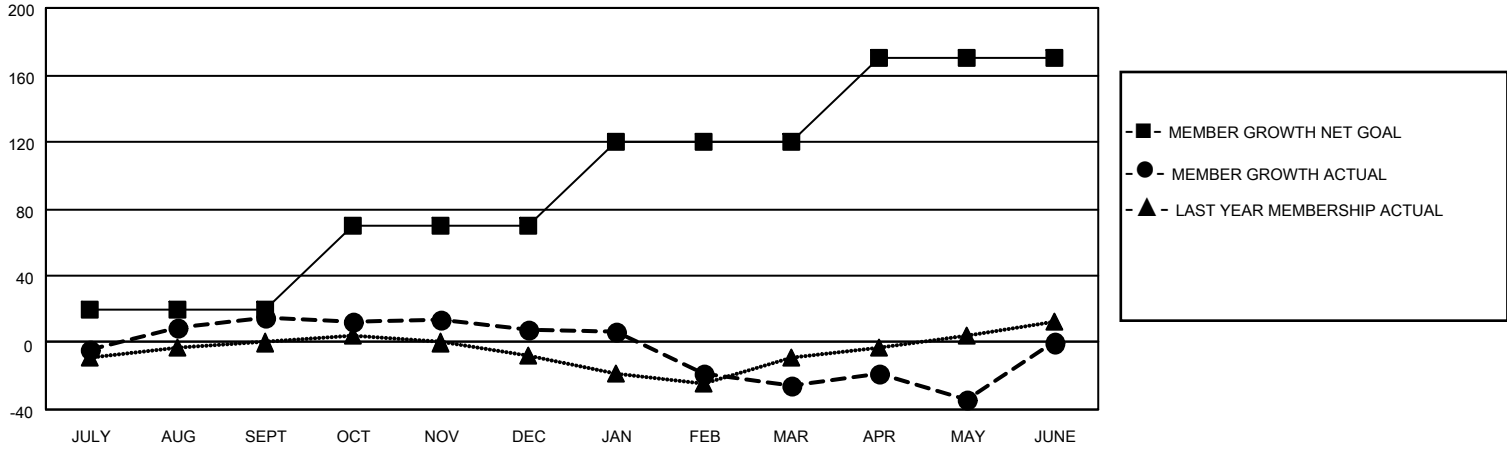
Clubs			
RESULTS FOR 2021-2022			
QUARTER	NEW CLUB GOAL	NEW CLUBS	DROPPED CLUBS
JULY/AUG/SEPT	0	0	0
OCT/NOV/DEC	1	0	0
JAN/FEB/MAR	0	0	1
APR/MAY/JUNE	0	0	0

Members			
RESULTS FOR 2021-2022			
QUARTER	MEMBER GROWTH NET GOAL	MEMBER GROWTH ACTUAL	DROPPED MEMBERS ACTUAL (including transfers)
JULY/AUG/SEPT	20	46	27
OCT/NOV/DEC	50	27	33
JAN/FEB/MAR	50	18	52
APR/MAY/JUNE	50	32	33

**GOALS AND ACTUAL NEW CLUBS CUMULATIVE**



**GOALS AND ACTUAL MEMBERS CUMULATIVE**



**DROPPED CLUBS: 1**

**19 CLUBS OF 34 ADDED 1 OR MORE NEW MEMBERS**

**GENDER DISTRIBUTION**

MALE	353 (51.46%)
FEMALE	333 (48.54%)
NON BINARY	0 (0.00%)
PREFER NOT TO ANSWER	0 (0.00%)

**DROPPED MEMBERS**

[CLICK HERE FOR CUMULATIVE MEMBERSHIP DATA](#)

DECEASED	13
CLUB CANCELLED	12
OTHER	120
<b>TOTAL</b>	<b>145</b>

TOTAL FAMILY UNIT MEMBERS	80
FAMILY MEMBERS PAYING HALF DUES	41